

BLOOMFIELD TO BARNARELY Scale Horiz. 1:2500 Vert. 1:500

R:\MCT0597 - N28 Upgrade Scheme - Engineering Consultancy Services\8.0 Drawings\GDMCT0597\GE0001-07.dwg

Includes Ordnance Survey Ireland data reproduced under OSI Licence number Cork County Council 2010/2006/ CCMA/ Cork County Council  
 Unauthorised reproduction infringes Ordnance Survey Ireland and Government of Ireland copyright. © Ordnance Survey Ireland, 2017

Client

**Cork County Council**  
 National Roads Office,  
 Richmond,  
 Glanmire,  
 Co. Cork.  
 Tel. No: (021) 4821046  
 Fax. No: (021) 4866209

**General Notes**

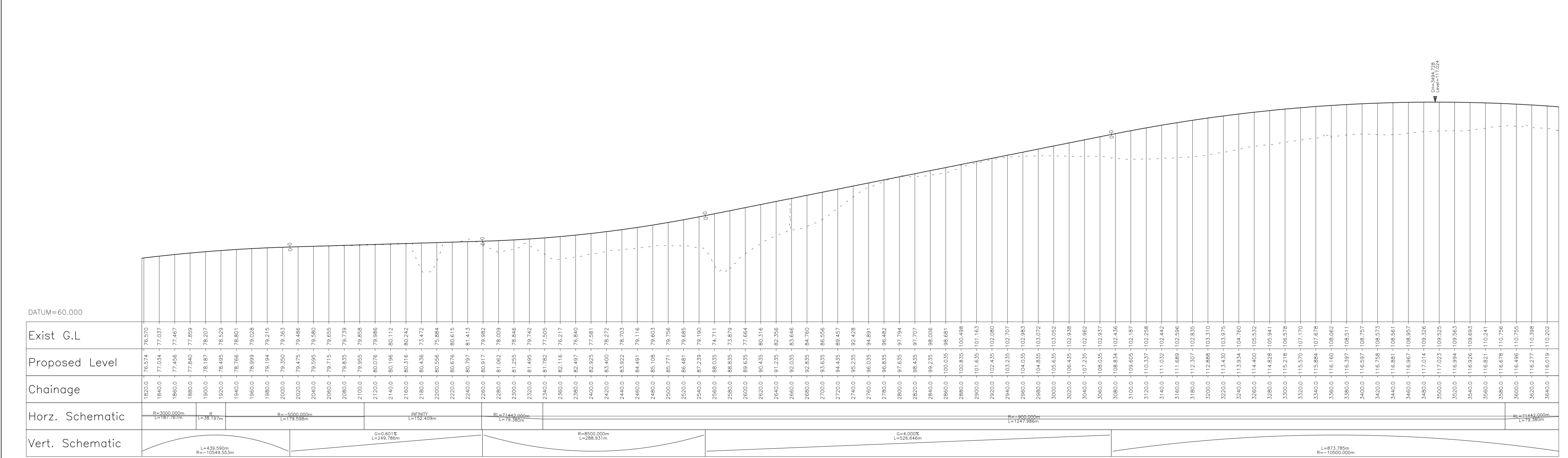
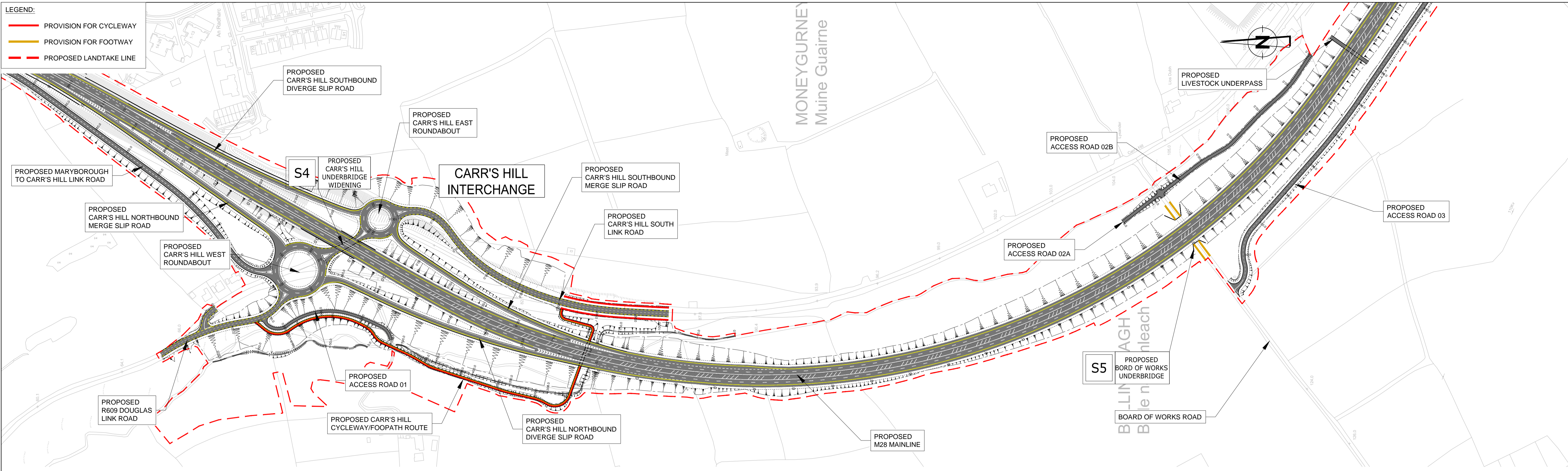
- This drawing is the property of RPS Consulting Engineers, it is a confidential document and must not be copied, used, or its content divulged without prior written consent.
- All Levels refer to Ordnance Survey Datum, Main Head.
- DO NOT SCALE, use figured dimensions only, if in doubt ask.
- Hard copies, dwf and pdf will form a controlled issue of the drawing. All other formats (dwg etc) are deemed to be an uncontrolled issue and any work carried out based on these files is at the recipients own risk. RPS will not accept any responsibility for any errors from the use of these files, either by human error by the recipient, listing of the un-dimensioned measurements, compatibility with the recipients software, and any errors arising when these files are used to aid the recipients drawing production, or setting out on site.

No.	Date	Drawn	Checked	App	Amendment / Issue
F01	MAY'17	DH	PB	MM	FINAL ISSUE

**RPS**  
 Innishmore  
 Ballincollig  
 Co. Cork  
 Ireland

T +353 21 4665900  
 W www.rpsgroup.com/ireland  
 E ireland@rpsgroup.com

Drawn	DH	Project	<b>M28 CORK TO RINGASKIDDY PROJECT</b>		
Checked	PB	Title	<b>GEOMETRICS MAINLINE GEOMETRICS SHEET 1 OF 7</b>		
Approved	MN	File Ref.	MCT0597GE0001-07.dwg	Dwg. No.	GE0001
Date	OCT. 2014	Rev.	F01		
Scale	1:5000 @ A3 1:2500 @ A1				
Job No.	MCT0597				



BLOOMFIELD TO BARNARELY Scale Horiz. 1:2500 Vert. 1:500

Includes Ordnance Survey Ireland data reproduced under OSI Licence number Cork County Council 2010/2006/ CCMA/ Cork County Council  
 Unauthorised reproduction infringes Ordnance Survey Ireland and Government of Ireland copyright. © Ordnance Survey Ireland, 2017

Client

**Cork County Council**  
 National Roads Office,  
 Richmond,  
 Glanmire,  
 Co. Cork.  
 Tel. No: (021) 4821046  
 Fax. No: (021) 4866209

**General Notes**

- This drawing is the property of RPS Consulting Engineers, it is a confidential document and must not be copied, used, or its content divulged without prior written consent.
- All Levels refer to Ordnance Survey Datum, Mean Head.
- DO NOT SCALE, use figured dimensions only, if in doubt ask.
- Hard copies, dwf and pdf will form a controlled issue of the drawing. All other formats (dwg etc) are deemed to be an uncontrolled issue and any work carried out based on these files is at the recipients own risk. RPS will not accept any responsibility for any errors from the use of these files, either by human error by the recipient, listing of the un-dimensioned measurements, compatibility with the recipients software, and any errors arising when these files are used to aid the recipients drawing production, or setting out on site.

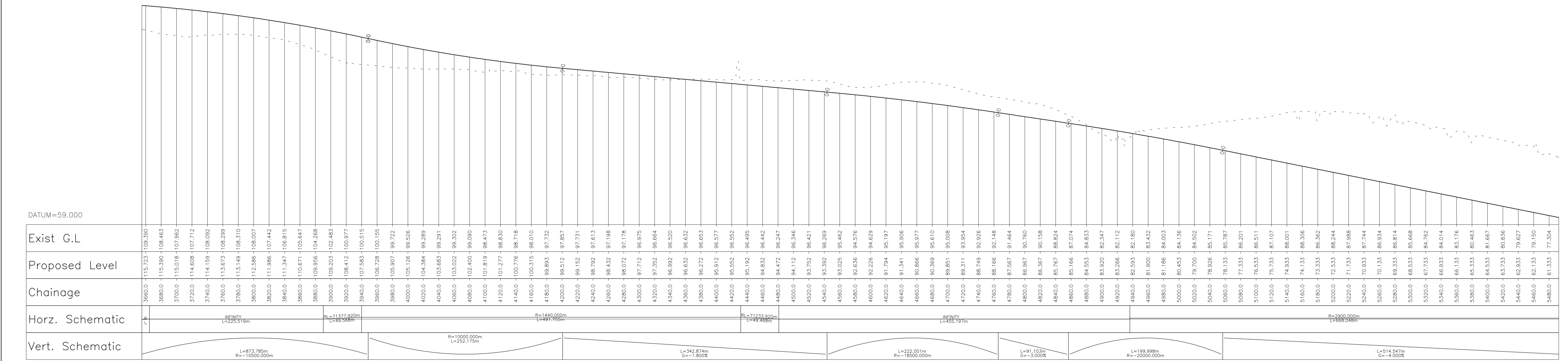
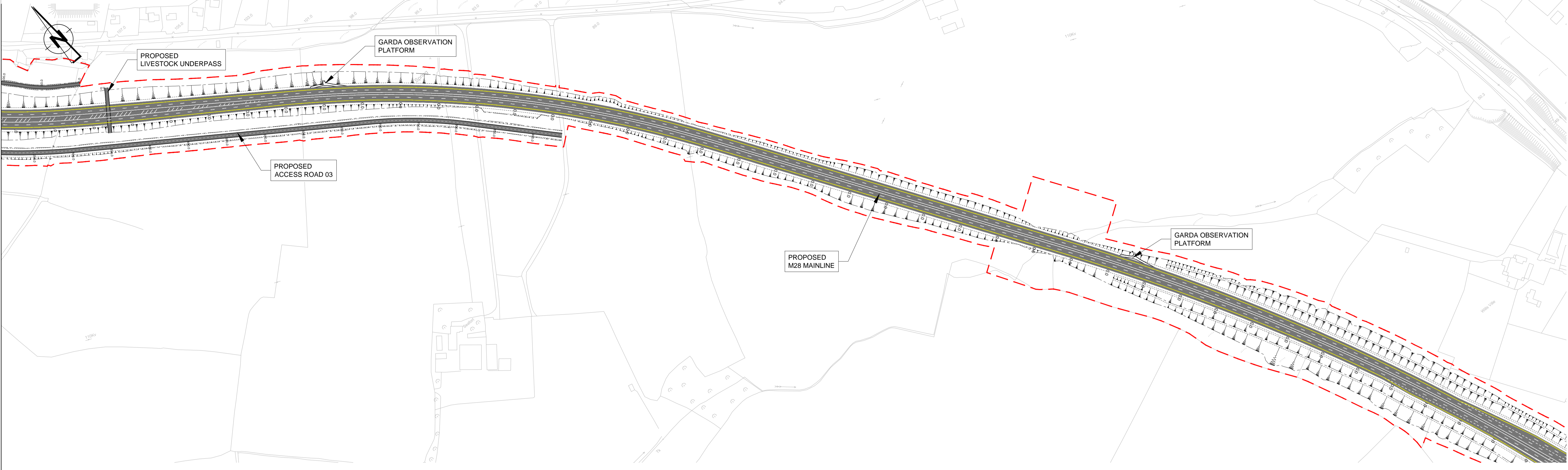
No.	Date	By	App	Amendment / Issue
F01	MAY'17	DH	MM	FINAL ISSUE

**RPS**  
 Innishmore  
 Ballincollig  
 Co. Cork  
 Ireland  
 T +353 21 4665900  
 W www.rpsgroup.com/ireland  
 E ireland@rpsgroup.com

Drawn	Checked	Approved	Date	Scale	Job No.	File Ref.	Dwg. No.	Rev.
DH	PB	MN	OCT. 2014	1:5000 @ A3 1:2500 @ A1	MCT0597	MCT0597GE0001-07.dwg	GE0002	F01

Project: **M28 CORK TO RINGASKIDDY PROJECT**  
 Title: **GEOMETRICS MAINLINE GEOMETRICS SHEET 2 OF 7**

**LEGEND:**  
 — PROVISION FOR CYCLEWAY  
 — PROVISION FOR FOOTWAY  
 - - - PROPOSED LANDTAKE LINE



BLOOMFIELD TO BARNARELY Scale Horiz. 1:2500 Vert. 1:500

Includes Ordnance Survey Ireland data reproduced under OSI Licence number Cork County Council 2010/2006/ CCMA/ Cork County Council  
 Unauthorised reproduction infringes Ordnance Survey Ireland and Government of Ireland copyright. © Ordnance Survey Ireland, 2017

Client

**Cork County Council**  
 National Roads Office,  
 Richmond,  
 Glanmire,  
 Co. Cork.  
 Tel. No: (021) 4821046  
 Fax. No: (021) 4866209

**General Notes**

- This drawing is the property of RPS Consulting Engineers, it is a confidential document and must not be copied, used, or its content divulged without prior written consent.
- All Levels refer to Ordnance Survey Datum, Main Head.
- DO NOT SCALE, use figured dimensions only, if in doubt ask.
- Hard copies, dwf and pdf will form a controlled issue of the drawing. All other formats (dwg etc) are deemed to be an uncontrolled issue and any work carried out based on these files is at the recipients own risk. RPS will not accept any responsibility for any errors from the use of these files, either by human error by the recipient, listing of the un-dimensioned measurements, compatibility with the recipients software, and any errors arising when these files are used to aid the recipients drawing production, or setting out on site.

No.	Date	By	App	Amendment / Issue
F01	MAY'17	DH	MM	FINAL ISSUE

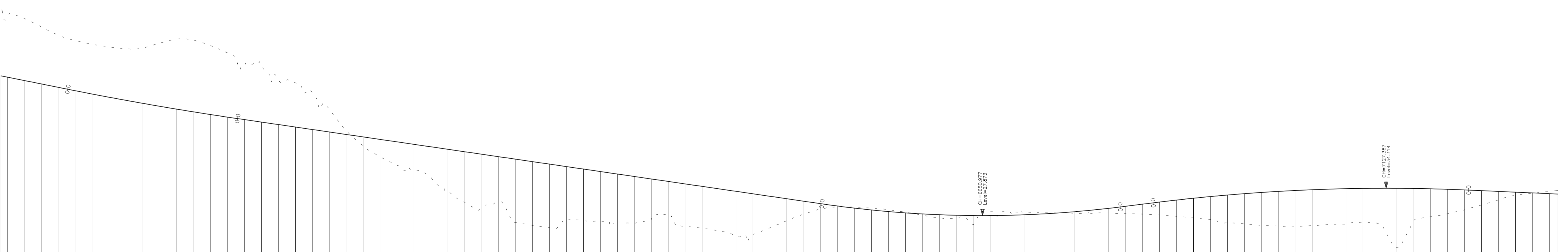
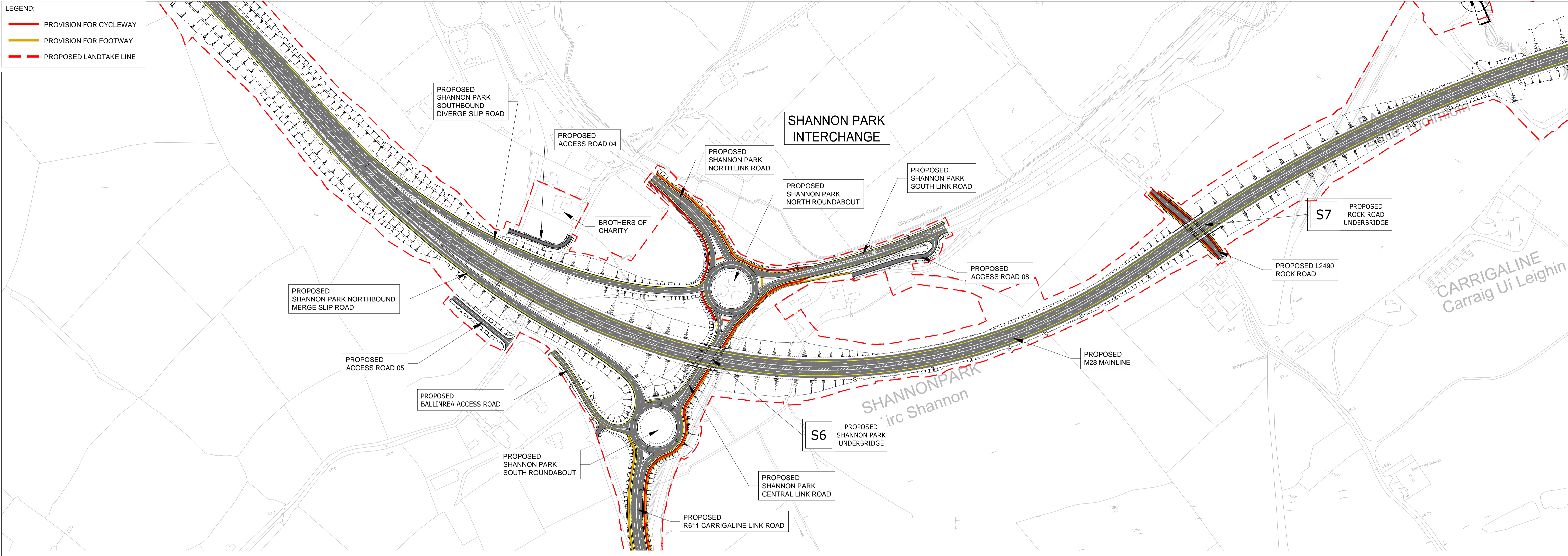
**RPS**  
 Innishmore  
 Ballincollig  
 Co. Cork  
 Ireland  
 T +353 21 4665900  
 W www.rpsgroup.com/ireland  
 E ireland@rpsgroup.com

Drawn	DH	Project	<b>M28 CORK TO RINGASKIDDY PROJECT</b>		
Checked	PB				
Approved	MN				
Date	OCT. 2014	Title	<b>GEOMETRICS MAINLINE GEOMETRICS SHEET 3 OF 7</b>		
Scale	1:5000 @ A3 1:2500 @ A1	File Ref.	MCT0597GE0001-07.dwg	Dwg. No.	GE0003
Job No.	MCT0597	Rev.	F01		

R:\MCT0597 - M28 Upgrade Scheme - Engineering Consultancy Services\8.0 Drawings\06\MCT0597GE0001-07.dwg

**LEGEND:**

- PROVISION FOR CYCLEWAY
- PROVISION FOR FOOTWAY
- PROPOSED LANDTAKE LINE



Station	Exist G.L.	Proposed Level	Chainage
5500.0	60.533	74.670	5500.0
5520.0	59.733	74.362	5520.0
5540.0	58.933	72.390	5540.0
5560.0	58.133	70.456	5560.0
5580.0	57.335	69.190	5580.0
5600.0	56.556	68.279	5600.0
5620.0	55.798	67.679	5620.0
5640.0	55.061	67.210	5640.0
5660.0	54.346	67.398	5660.0
5680.0	53.653	68.575	5680.0
5700.0	52.982	69.497	5700.0
5720.0	52.332	69.264	5720.0
5740.0	51.703	67.960	5740.0
5760.0	51.097	66.232	5760.0
5780.0	50.510	63.452	5780.0
5800.0	49.926	63.539	5800.0
5820.0	49.343	59.933	5820.0
5840.0	48.760	59.181	5840.0
5860.0	48.177	56.957	5860.0
5880.0	47.593	53.044	5880.0
5900.0	47.010	47.857	5900.0
5920.0	46.427	44.281	5920.0
5940.0	45.844	41.732	5940.0
5960.0	45.260	39.759	5960.0
5980.0	44.677	38.632	5980.0
6000.0	44.084	36.887	6000.0
6020.0	43.511	33.396	6020.0
6040.0	42.927	30.957	6040.0
6060.0	42.344	29.821	6060.0
6080.0	41.761	30.997	6080.0
6100.0	41.178	26.227	6100.0
6120.0	40.594	25.571	6120.0
6140.0	40.011	25.011	6140.0
6160.0	39.428	27.104	6160.0
6180.0	38.844	26.655	6180.0
6200.0	38.261	26.481	6200.0
6220.0	37.678	26.359	6220.0
6240.0	37.095	26.116	6240.0
6260.0	36.511	26.984	6260.0
6280.0	35.928	28.003	6280.0
6300.0	35.345	25.324	6300.0
6320.0	34.762	24.891	6320.0
6340.0	34.178	24.256	6340.0
6360.0	33.595	23.131	6360.0
6380.0	33.012	23.436	6380.0
6400.0	31.845	26.662	6400.0
6420.0	31.262	28.197	6420.0
6440.0	30.679	29.454	6440.0
6460.0	30.122	29.942	6460.0
6480.0	29.567	29.890	6480.0
6500.0	29.013	29.639	6500.0
6520.0	28.461	29.219	6520.0
6540.0	27.910	28.711	6540.0
6560.0	27.361	27.952	6560.0
6580.0	26.813	27.325	6580.0
6600.0	26.267	27.333	6600.0
6620.0	25.723	25.711	6620.0
6640.0	25.180	28.768	6640.0
6660.0	24.638	28.812	6660.0
6680.0	24.095	28.487	6680.0
6700.0	23.552	28.572	6700.0
6720.0	23.009	28.425	6720.0
6740.0	22.466	28.684	6740.0
6760.0	21.923	28.357	6760.0
6780.0	21.380	26.461	6780.0
6800.0	20.837	28.139	6800.0
6820.0	20.294	28.229	6820.0
6840.0	19.751	27.995	6840.0
6860.0	19.208	27.707	6860.0
6880.0	18.665	27.316	6880.0
6900.0	18.122	26.932	6900.0
6920.0	17.579	26.800	6920.0
6940.0	17.036	25.946	6940.0
6960.0	16.493	25.572	6960.0
6980.0	15.950	25.399	6980.0
7000.0	15.407	25.242	7000.0
7020.0	14.864	25.501	7020.0
7040.0	14.321	25.763	7040.0
7060.0	13.778	25.924	7060.0
7080.0	13.235	26.343	7080.0
7100.0	12.692	26.343	7100.0
7120.0	12.149	25.938	7120.0
7140.0	11.606	20.305	7140.0
7160.0	11.063	26.664	7160.0
7180.0	10.520	27.600	7180.0
7200.0	9.977	28.302	7200.0
7220.0	9.434	29.231	7220.0
7240.0	8.891	30.390	7240.0
7260.0	8.348	31.577	7260.0
7280.0	7.805	32.667	7280.0
7300.0	7.262	33.163	7300.0
7320.0	6.719	33.041	7320.0

BLOOMFIELD TO BARNARELY Scale Horiz. 1:2500 Vert. 1:500

R:\MCT0597 - M28 Upgrade Scheme - Engineering Consultancy Services\8.0 Drawings\GdMCT0597GE0001-07.dwg

Includes Ordnance Survey Ireland data reproduced under OSI Licence number Cork County Council 2010/2006/ CCMA/ Cork County Council  
Unauthorised reproduction infringes Ordnance Survey Ireland and Government of Ireland copyright. © Ordnance Survey Ireland, 2017

Client

**Cork County Council**  
National Roads Office,  
Richmond,  
Glanmire,  
Co. Cork.  
Tel. No: (021) 4821046  
Fax. No: (021) 4866209

**General Notes**

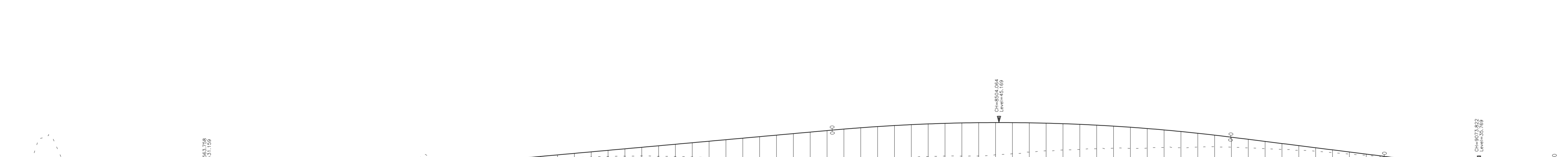
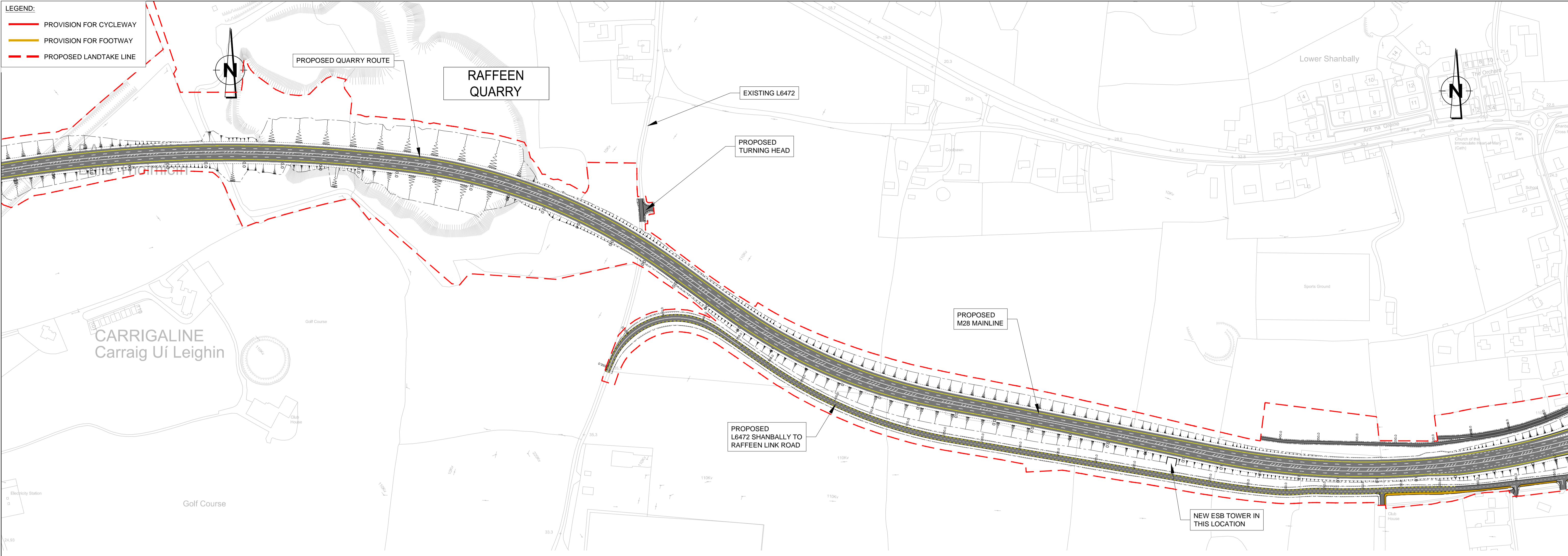
- This drawing is the property of RPS Consulting Engineers, it is a confidential document and must not be copied, used, or its content divulged without prior written consent.
- All Levels refer to Ordnance Survey Datum, Mean Head.
- DO NOT SCALE, use figured dimensions only, if in doubt ask.
- Hard copies, dwf and pdf will form a controlled issue of the drawing. All other formats (dwg etc) are deemed to be an uncontrolled issue and any work carried out based on these files is at the recipients own risk. RPS will not accept any responsibility for any errors from the use of these files, either by human error by the recipient, listing of the un-dimensioned measurements, compatibility with the recipients software, and any errors arising when these files are used to aid the recipients drawing production, or setting out on site.

No.	Date	By	App	Amendment / Issue
F01	MAY 17	DH	MM	FINAL ISSUE

Innishmore  
Ballincollig  
Co. Cork  
Ireland

T +353 21 4665900  
W www.rpsgroup.com/ireland  
E ireland@rpsgroup.com

Drawn	DH	Project	<b>M28 CORK TO RINGASKIDDY PROJECT</b>		
Checked	PB	Title	<b>GEOMETRICS MAINLINE GEOMETRICS SHEET 4 OF 7</b>		
Approved	MN	File Ref.	MCT0597GE0001-07.dwg	Dwg. No.	GE0004
Date	OCT. 2014	Rev.	F01		
Scale	1:5000 @ A3 1:2500 @ A1				
Job No.	MCT0597				



Stationing	Exist G.L.	Proposed Level	Chainage	Horz. Schematic	Vert. Schematic
7340.0	32.864	33.996			
7360.0	32.687	38.723			
7380.0	32.511	41.500			
7400.0	32.334	36.878			
7420.0	32.157	31.461			
7440.0	31.980	18.848			
7460.0	31.803	16.839			
7480.0	31.626	20.010			
7500.0	31.449	19.690			
7520.0	31.272	17.209			
7540.0	31.095	16.765			
7560.0	31.160	17.180			
7580.0	31.178	14.963			
7600.0	31.253	15.008			
7620.0	31.385	14.808			
7640.0	31.575	15.930			
7660.0	31.821	14.819			
7680.0	32.125	14.712			
7700.0	32.478	14.632			
7720.0	32.838	14.580			
7740.0	33.198	14.554			
7760.0	33.558	15.499			
7780.0	33.918	33.509			
7800.0	34.278	34.697			
7820.0	34.638	37.729			
7840.0	34.998	35.555			
7860.0	35.358	35.609			
7880.0	35.718	35.601			
7900.0	36.078	35.742			
7920.0	36.438	35.724			
7940.0	36.798	35.857			
7960.0	37.158	35.802			
7980.0	37.518	36.552			
8000.0	37.878	36.891			
8020.0	38.238	37.014			
8040.0	38.598	37.151			
8060.0	38.958	37.223			
8080.0	39.318	37.286			
8100.0	39.678	37.182			
8120.0	40.038	37.149			
8140.0	40.398	37.041			
8160.0	40.758	36.896			
8180.0	41.118	36.732			
8200.0	41.478	36.535			
8220.0	41.838	36.283			
8240.0	42.198	36.244			
8260.0	42.558	36.111			
8280.0	42.918	36.187			
8300.0	43.278	36.272			
8320.0	43.638	36.331			
8340.0	43.998	36.390			
8360.0	44.358	36.475			
8380.0	44.718	36.532			
8400.0	45.078	36.589			
8420.0	45.438	37.113			
8440.0	45.798	37.254			
8460.0	46.158	37.236			
8480.0	46.518	37.288			
8500.0	46.878	37.528			
8520.0	47.238	37.800			
8540.0	47.598	38.162			
8560.0	47.958	38.480			
8580.0	48.318	38.677			
8600.0	48.678	38.779			
8620.0	49.038	38.964			
8640.0	49.398	39.111			
8660.0	49.758	39.059			
8680.0	50.118	39.116			
8700.0	50.478	39.277			
8720.0	50.838	39.194			
8740.0	51.198	39.378			
8760.0	51.558	39.440			
8780.0	51.918	39.350			
8800.0	52.278	39.173			
8820.0	52.638	38.991			
8840.0	52.998	38.814			
8860.0	53.358	38.598			
8880.0	53.718	38.391			
8900.0	54.078	38.053			
8920.0	54.438	37.710			
8940.0	54.798	37.416			
8960.0	55.158	36.982			
8980.0	55.518	36.333			
9000.0	55.878	35.899			
9020.0	56.238	35.470			
9040.0	56.598	34.750			
9060.0	56.958	34.037			
9080.0	57.318	33.166			
9100.0	57.678	32.614			
9120.0	58.038	32.324			
9140.0	58.398	32.078			
9160.0	58.758	31.612			

BLOOMFIELD TO BARNARELY Scale Horiz. 1:2500 Vert. 1:500

R:\MCT0597 - N28 Upgrade Scheme - Engineering Consultancy Services\8.0 Drawings\GdMCT0597\GE0001-07.dwg

Includes Ordnance Survey Ireland data reproduced under OSI Licence number Cork County Council 2010/2006/ CCMA/ Cork County Council  
Unauthorised reproduction infringes Ordnance Survey Ireland and Government of Ireland copyright. © Ordnance Survey Ireland, 2017

Client

**TII**  
Bonneagar Iompair Éireann  
Transport Infrastructure Ireland

**Cork County Council**  
National Roads Office,  
Richmond,  
Glanmire,  
Co. Cork.  
Tel. No: (021) 4821046  
Fax. No: (021) 4862029

**Cork County Council**  
National Roads Office,  
Richmond,  
Glanmire,  
Co. Cork.  
Tel. No: (021) 4821046  
Fax. No: (021) 4862029

**General Notes**

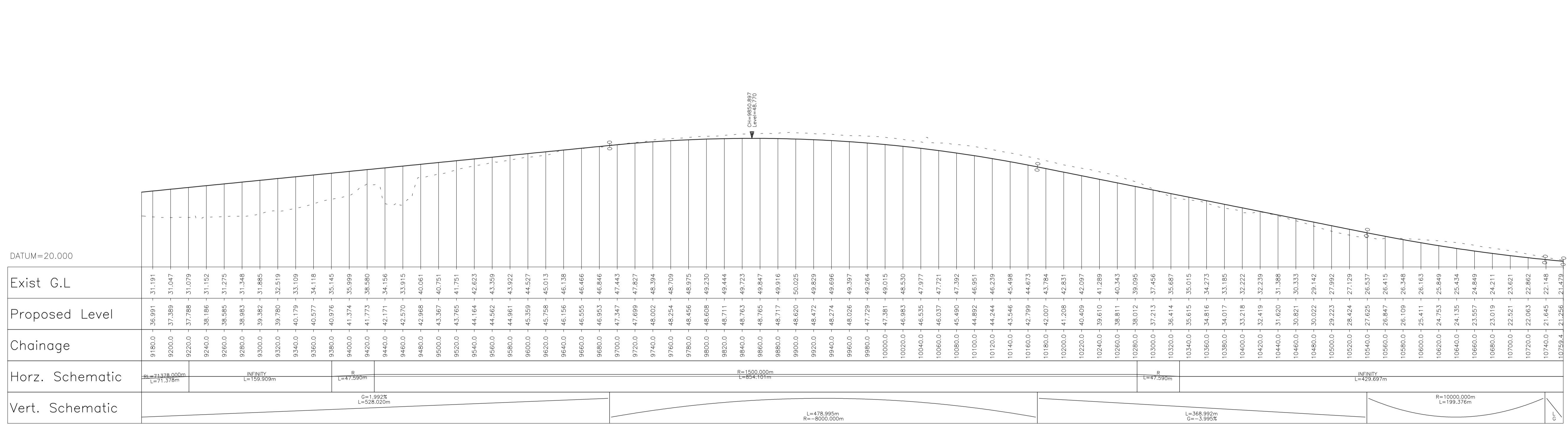
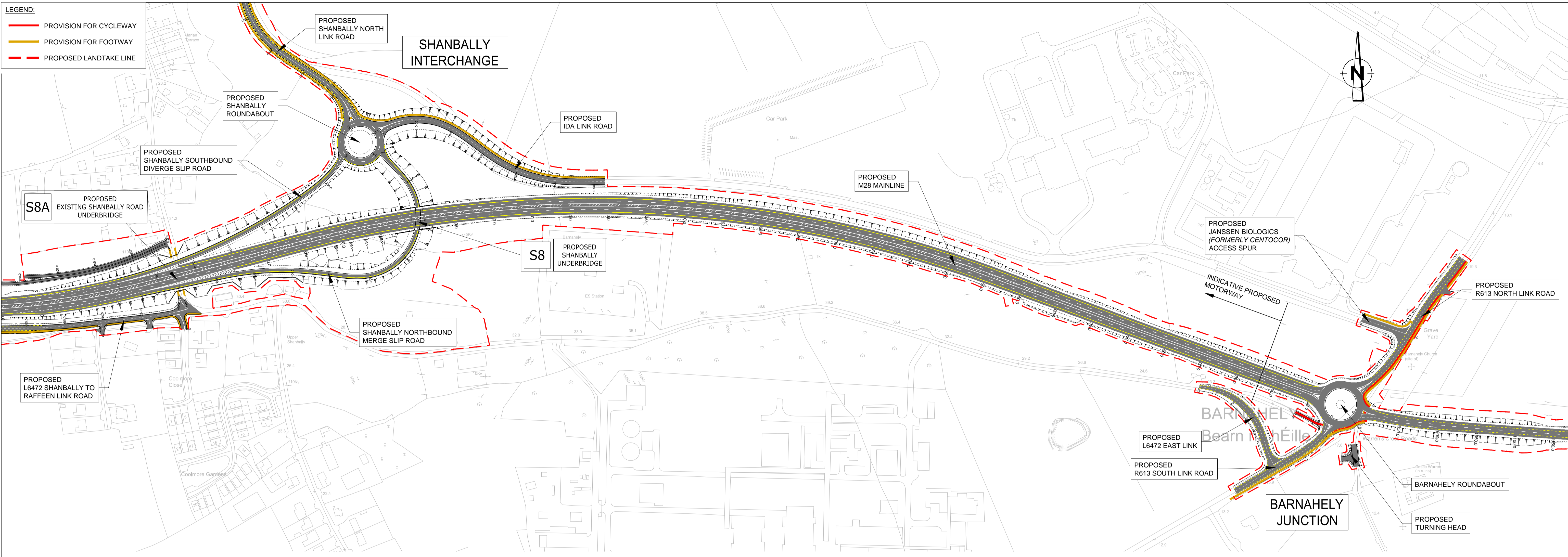
- (i) This drawing is the property of RPS Consulting Engineers, it is a confidential document and must not be copied, used, or its content divulged without prior written consent.
- (ii) All Levels refer to Ordnance Survey Datum, Mean Head.
- (iii) DO NOT SCALE, use figured dimensions only, if in doubt ask.
- (iv) Hard copies, dwg and pdf will form a controlled issue of the drawing. All other formats (dwg etc) are deemed to be an uncontrolled issue and any work carried out based on these files is at the recipients own risk. RPS will not accept any responsibility for any errors from the use of these files, either by human error by the recipient, listing of the un-dimensioned measurements, compatibility with the recipients software, and any errors arising when these files are used to aid the recipients drawing production, or setting out on site.

No.	Date	By	App	Amendment / Issue
F01	MAY'17	DH	MM	FINAL ISSUE

**RPS**  
Innishmore  
Ballincollig  
Co. Cork  
Ireland

T +353 21 4665900  
W www.rpsgroup.com/ireland  
E ireland@rpsgroup.com

Project		Title	
Drawn	DH	M28 CORK TO RINGASKIDDY PROJECT	
Checked	PB	GEOMETRICS	
Approved	MN	MAINLINE GEOMETRICS	
Date	OCT. 2014	SHEET 5 OF 7	
Scale	1:5000 @ A3 1:2500 @ A1	File Ref.	MCT0597GE0001-07.dwg
Job No.	MCT0597	Dwg. No.	GE0005
		Rev.	F01



BLOOMFIELD TO BARNARELY Scale Horiz. 1:2500 Vert. 1:500

R:\MCT0597 - M28 Upgrade Scheme - Engineering Consultancy Services\8.0 Drawings\0697\GE0001-07.dwg

Includes Ordnance Survey Ireland data reproduced under OSI Licence number Cork County Council 2010/2006/ CCMA/ Cork County Council  
 Unauthorised reproduction infringes Ordnance Survey Ireland and Government of Ireland copyright. © Ordnance Survey Ireland, 2017

Client

**Cork County Council**  
 National Roads Office,  
 Richmond,  
 Glanmire,  
 Co. Cork.  
 Tel. No: (021) 4821046  
 Fax. No: (021) 4866209

No.	Date	By	App	Amendment / Issue
F01	MAY'17	DH	MIN	FINAL ISSUE

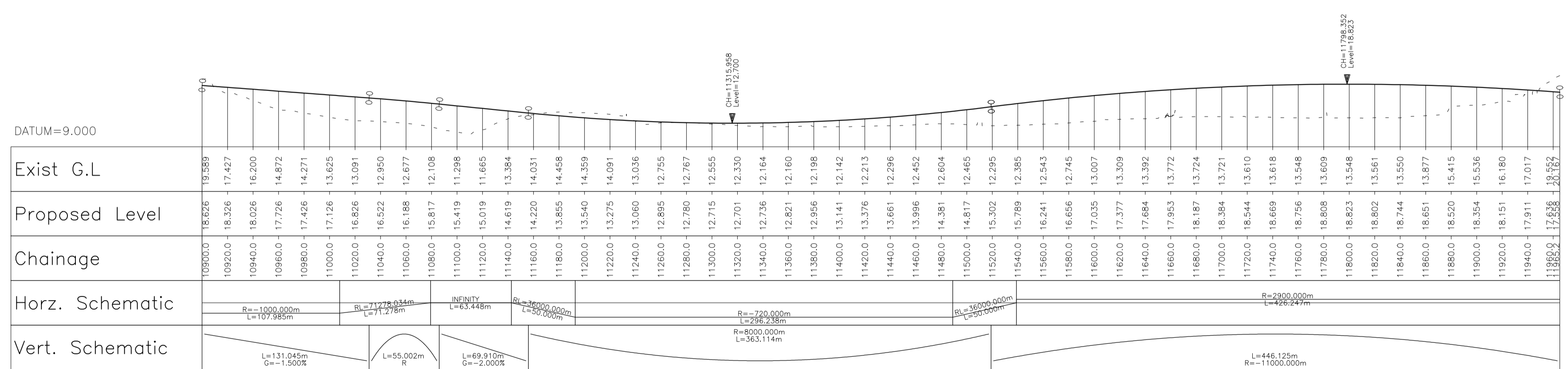
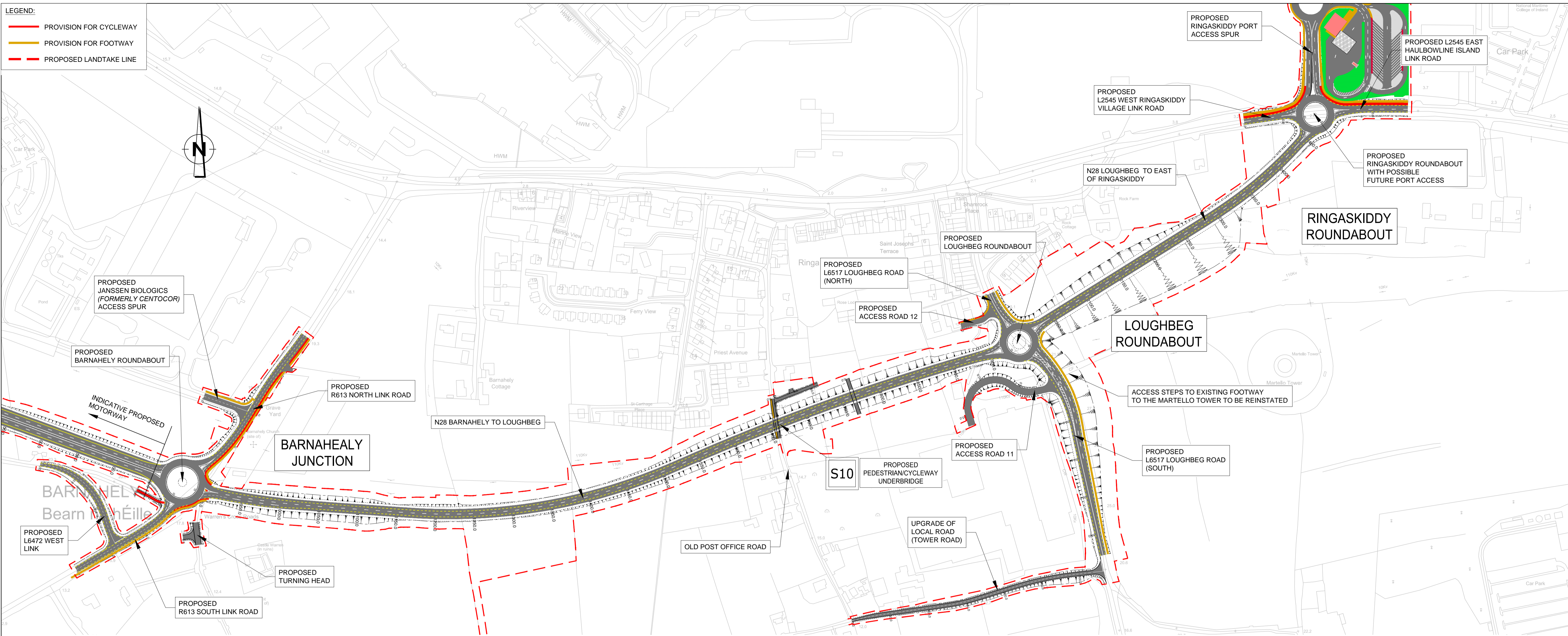
**General Notes**

- This drawing is the property of RPS Consulting Engineers, it is a confidential document and must not be copied, used, or its content divulged without prior written consent.
- All Levels refer to Ordnance Survey Datum, Main Head.
- DO NOT SCALE, use figured dimensions only, if in doubt ask.
- Hard copies, dwg and pdf will form a controlled issue of the drawing. All other formats (dwg etc) are deemed to be an uncontrolled issue and any work carried out based on these files is at the recipients own risk. RPS will not accept any responsibility for any errors from the use of these files, either by human error by the recipient, listing of the un-dimensioned measurements, compatibility with the recipients software, and any errors arising when these files are used to aid the recipients drawing production, or setting out on site.

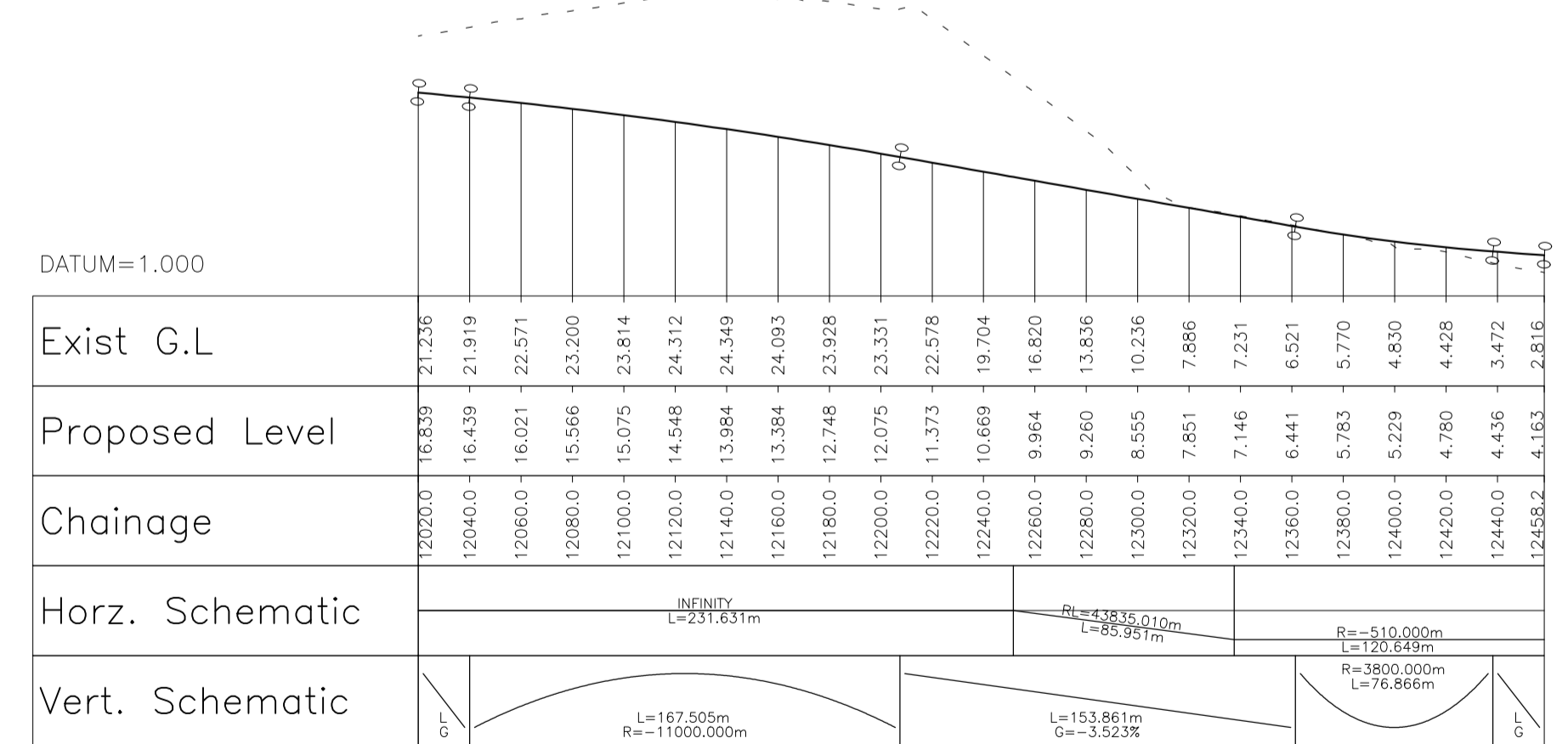
**RPS**  
 Innishmore  
 Ballincollig  
 Co. Cork  
 Ireland

T +353 21 4665900  
 W www.rpsgroup.com/ireland  
 E ireland@rpsgroup.com

Drawn	DH	Project	<b>M28 CORK TO RINGASKIDDY PROJECT</b>		
Checked	PB				
Approved	MN				
Date	OCT. 2014	Title	<b>GEOMETRICS MAINLINE GEOMETRICS SHEET 6 OF 7</b>		
Scale	1:5000 @ A3 1:2500 @ A1	File Ref.	MCT0597GE0001-07.dwg	Dwg. No.	GE0006
Job No.	MCT0597	Rev.	F01		



BARNAHELY TO LOUGHBEG Scale Horiz. 1:2500 Vert. 1:500



LOUGHBEG TO EAST OF RINGASKIDDY Scale Horiz. 1:2500 Vert. 1:500

R:\MCT0597 - N28 Upgrade Scheme - Engineering Consultancy Services\8.0 Drawings\G\MCT0597\GE0001-07.dwg

Includes Ordnance Survey Ireland data reproduced under OSI Licence number Cork County Council 2010/2006/ CCMA/ Cork County Council  
Unauthorised reproduction infringes Ordnance Survey Ireland and Government of Ireland copyright. © Ordnance Survey Ireland, 2017

Client

**Cork County Council**  
National Roads Office,  
Richmond,  
Glanmire,  
Co. Cork.  
Tel. No: (021) 4821046  
Fax. No: (021) 4866209

**General Notes**  
(i) This drawing is the property of RPS Consulting Engineers, it is a confidential document and must not be copied, used, or its content divulged without prior written consent.  
(ii) All Levels refer to Ordnance Survey Datum, Main Head.  
(iii) DO NOT SCALE, use figured dimensions only, if in doubt ask.  
(iv) Hard copies, dwg and pdf will form a controlled issue of the drawing. All other formats (dwg etc) are deemed to be an uncontrolled issue and any work carried out based on these files is at the recipients own risk. RPS will not accept any responsibility for any errors from the use of these files, either by human error by the recipient, listing of the un-dimensioned measurements, compatibility with the recipients software, and any errors arising when these files are used to aid the recipients drawing production, or setting out on site.

No.	Date	By	App	Amendment / Issue
F01	MAY 17	DH	MM	FINAL ISSUE

**RPS**  
Innishmore  
Ballincollig  
Co. Cork  
Ireland  
T +353 21 4665900  
W www.rpsgroup.com/ireland  
E ireland@rpsgroup.com

Drawn	Checked	Approved	Date	Scale	Job No.	File Ref.	Dwg. No.	Rev.
DH	PB	MN	OCT. 2014	1:5000 @ A3 1:2500 @ A1	MCT0597	MCT0597GE0001-07.dwg	GE0007	F01

Project: **M28 CORK TO RINGASKIDDY PROJECT**  
Title: **GEOMETRICS MAINLINE GEOMETRICS SHEET 7 OF 7**